

# PLANAR QUICK-REFERENCE INSTALLATION GUIDE

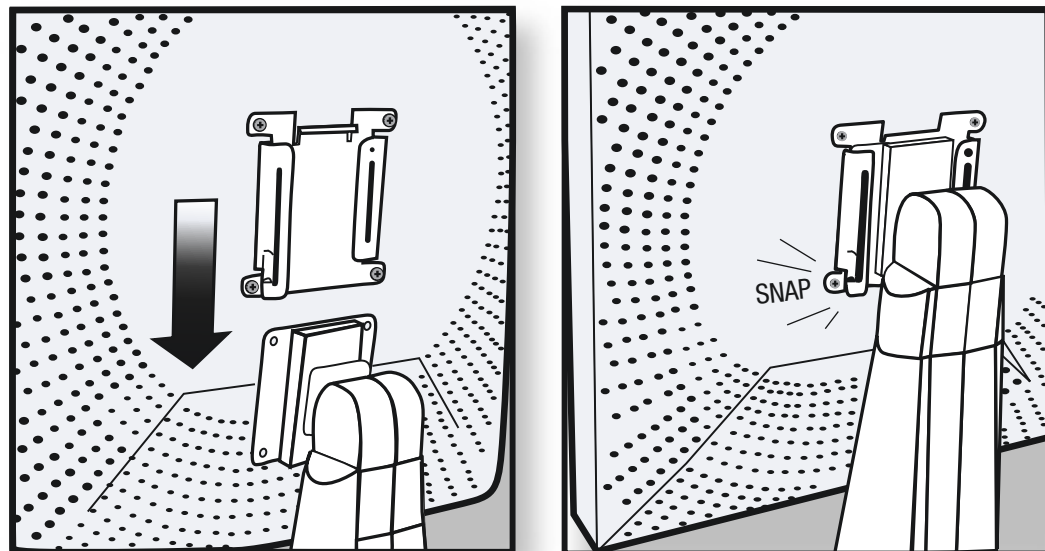
## Installing the C2 Flat Panel Display

### Safety Information

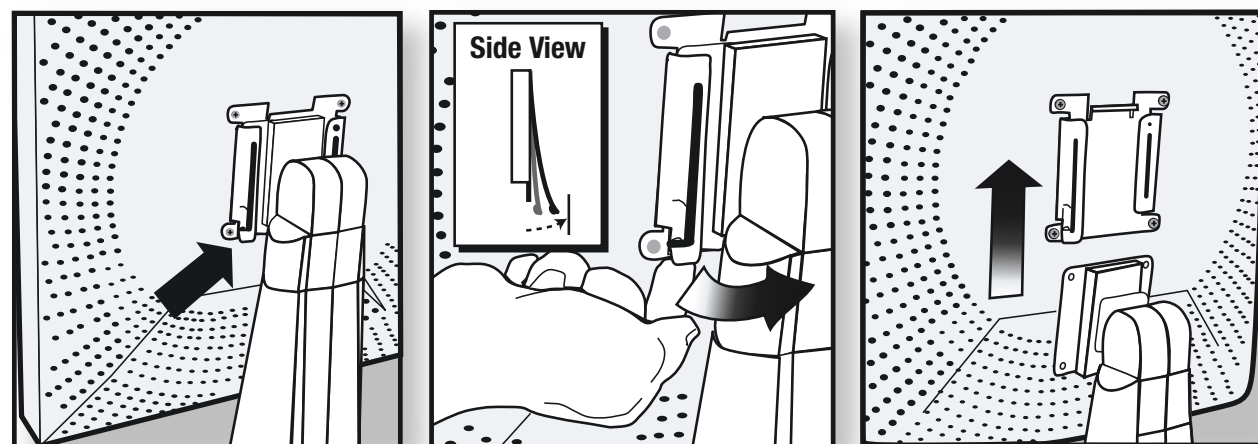
Static electricity can damage sensitive components on the display controller or computer. When handling or installing any computer component, wear an anti-static wrist or heel strap that is attached to a grounded source or touch one hand to a grounded metal surface, such as the power supply, to discharge static electricity from your body.



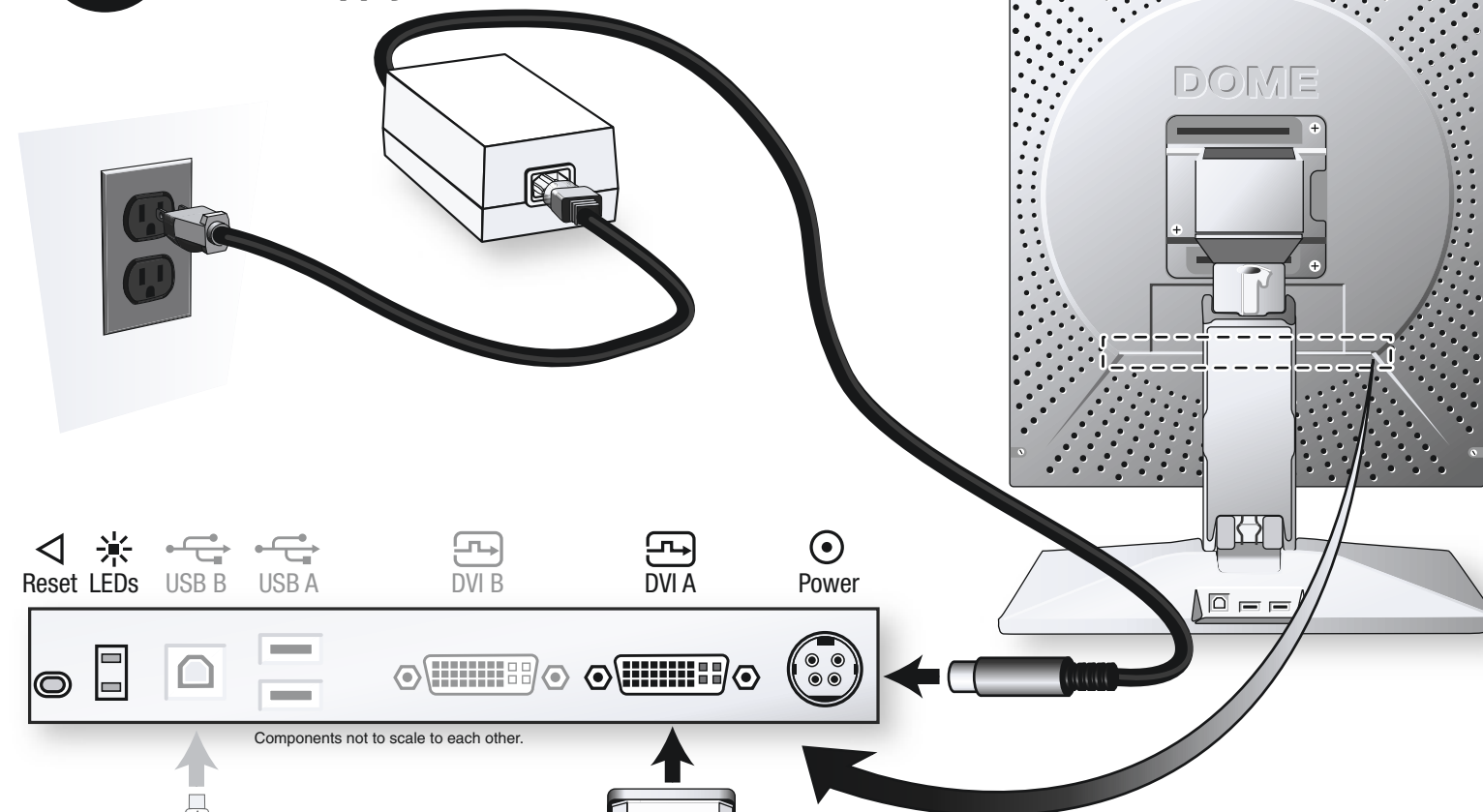
### 1 Mounting Flat Panel Display to Stand



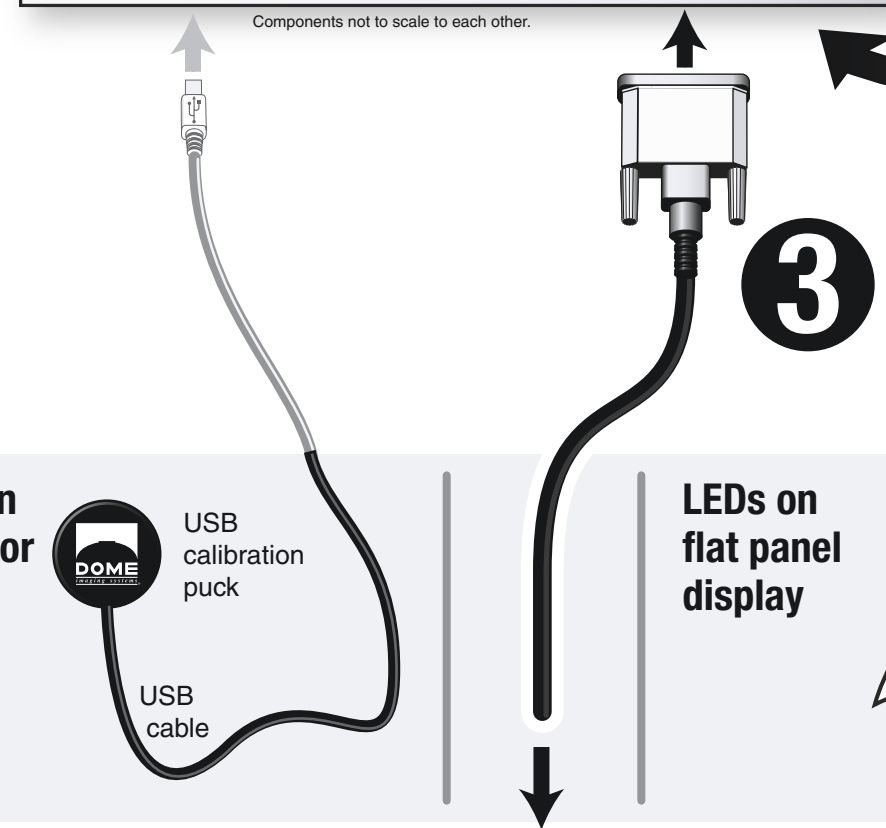
### Quick Release from Stand



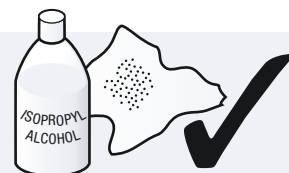
### 2 Connecting the Power Supply



### 3 Connecting Video Cable from the Display Controller



### How to clean the LCD screen



- Don't touch LCD screen
- Don't oversaturate cleaning cloth
- Don't use chemical sprays

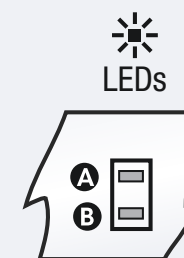
1. Unplug the power supply before cleaning the display.
2. Dampen a soft, clean cloth with isopropyl alcohol then wipe the LCD screen clean. Do not use or spray liquid, aerosol, ammonia, or other alcohol-based cleaners. Some chemical cleaners may damage the display and its case.

3. Wipe off water and other stains immediately to avoid damage to the LCD screen. Do not touch the LCD screen with your fingers; skin oils are difficult to remove from the screen. Do not saturate the cloth. Liquid that drips on the glass may seep into the display case and collect at the bottom of the enclosure.

### Connection of calibrator (Optional)



### LEDs on flat panel display



- **LED A** describes the digital-link status between the display controller and the interface.
  - **LED B** describes the display-panel status. It shows any faults currently in the panel.
- For a full description of LED lights status, please consult the installation and maintenance guide

Turn over for installation and connection to display controller...